



LCD DISPLAYS

FREE-STANDING OUTDOOR AND INDOOR LCD DISPLAYS OUTDOOR LCD CASSETTE
FORK-BOX WALLET BOX V-SHAPED PYLONS WALL AND CEILING-MOUNTED
INDOOR LCD DISPLAYS VIDEO WALLS



DIMEDIA

Outdoor Designs for Professionals



ISO 9001:2015
ISO 14001
International certificates

Contents

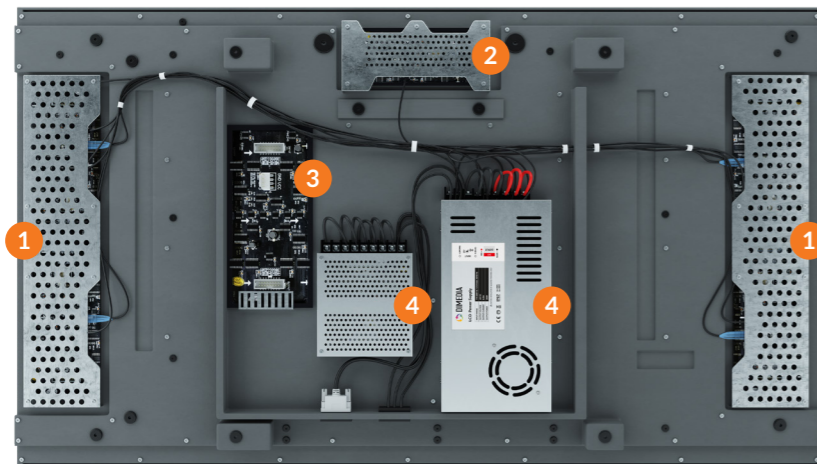
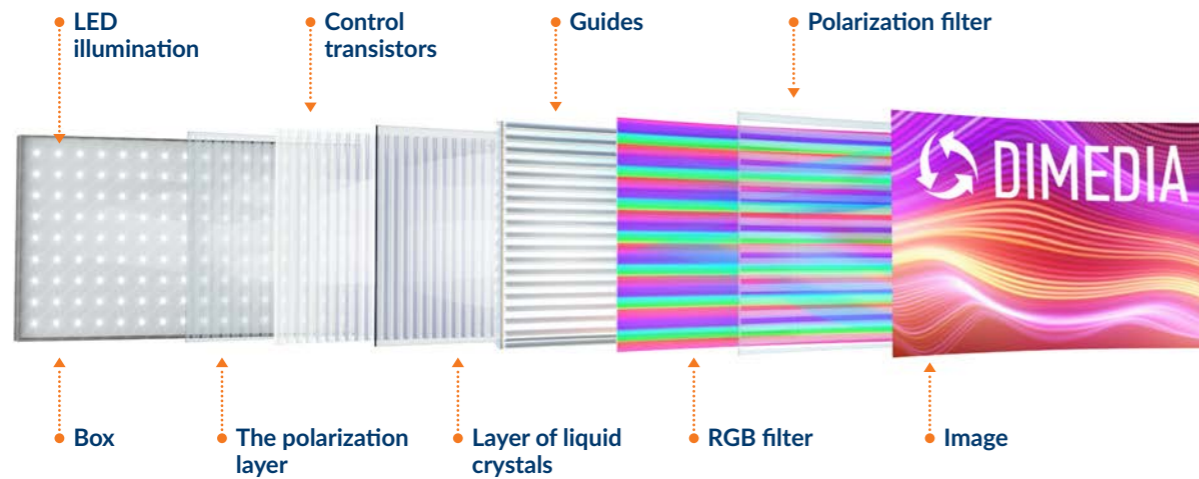
LCD Displays	2
Outdoor LCD Cassette	8
Free-standing Portrait Outdoor LCD Displays	10
Free-standing Landscape Outdoor LCD Displays	12
Fork-Box: Free-Standing Portrait Outdoor LCD Displays	14
Fork-Box: Free-Standing Landscape Outdoor LCD Displays	15
Wallet Box	16
V-shaped Pylon	18
Free-Standing Portrait Indoor LCD Displays	22
Free-Standing Portrait Indoor LCD Displays	23
Wall Portrait Indoor LCD Displays	24
Wall Landscape Indoor LCD Displays	25
Ceiling-mounted Portrait and Landscape LCD Displays	26
Wall and Floor Window LCD Displays	27
Media Player	28
Video Walls	30
Logistics	31
Our company	33
History	36

LCD Displays

Professional LCD displays are equipped with an industrial matrix with increased brightness and protected by anti-reflective glass. They are designed for outdoor or indoor use 24/7. They are issued in various executions and equipment can be equipped with a multi-touch panel.

Industrial grade	TV grade (commercial)
110 °C	68 °C

The use of Industrial grade matrices allows to make illumination brightness up to 5,000 cd/m².



- 1 Illumination drivers** are responsible for lighting control (LED backlight control board)
- 2 Matrix drivers** is responsible for managing the matrix (OC control board)

- 3 The video card** is responsible for receiving images from an external source and contains all the necessary connectors for connecting HDMI, DVI, etc. (Switch Board)
- 4 Matrix and backlight power supplies**

Advantages

- Working 24/7
- Brightness up to 5000 cd/m²
- FULL HD or 4K – depending on the size of the structure
- The screen is read in bright sunlight
- No black spot effect when working in the sun
- Industrial power supply
- Wide viewing angles up to 178°
- 4G, Wi-Fi, Ethernet – all types of connection
- Automatic brightness adjustment
- Cost-effective LED backlighting DIRECT LED
- Built-in media player for content management
- High resolution professional matrix of Samsung, LG, BOE
- High reliability of all components, up to 3 years warranty

Additional Options

At the customer's request, LCD displays can be equipped with the following options:

- Super-bright screen
- IP-camera connected to the media player
- Alarm button for communication with security services
- Touch screen display
- WI-FI access point design equipment
- Microphone
- Protective coating
- Connection of the structure to 3G-4G network
- Audible alert
- Automatic brightness adjustment
- NFC readers
- Anti-reflective glass
- Antigraffiti film coating
- Status of monitoring system and all necessary sensors
- Construction heating

Our company uses three types of cooling systems

Outdoor and window LCD screens use ultra-bright LED backlighting that generates a lot of heat. To ensure smooth operation of the screen and

preserve the life of the matrix, liquid crystals must be in a certain temperature range. There are currently three main cooling systems.

1 Forced ventilation

Outdoor air intake by the fan system and blowing the heated elements inside the case.

- Requires installation in a separate case
- Consumption filters for air purification

LCD-screen + Air filters + Outer Case = **Up to +40 °C**

2 Radiator cooling

Modern way of cooling due to heat dissipating radiators from heated elements.

- Does not require installation in a separate case
- No mandatory consumables

Radiator + LCD-screen = **Up to +50 °C**

Outdoor LCD-cassette
Read more about the system on the next page p. 8-9 →

3 Conditioning

Connecting an industrial air conditioner to a closed air circulation system maintains the optimum temperature for the components.

- Requires a separate case with additional space for air conditioning
- Consumption filters for air purification
- Freon replacement every few years

Industrial air conditioner + LCD-screen + Outer Case = **Up to +55 °C**

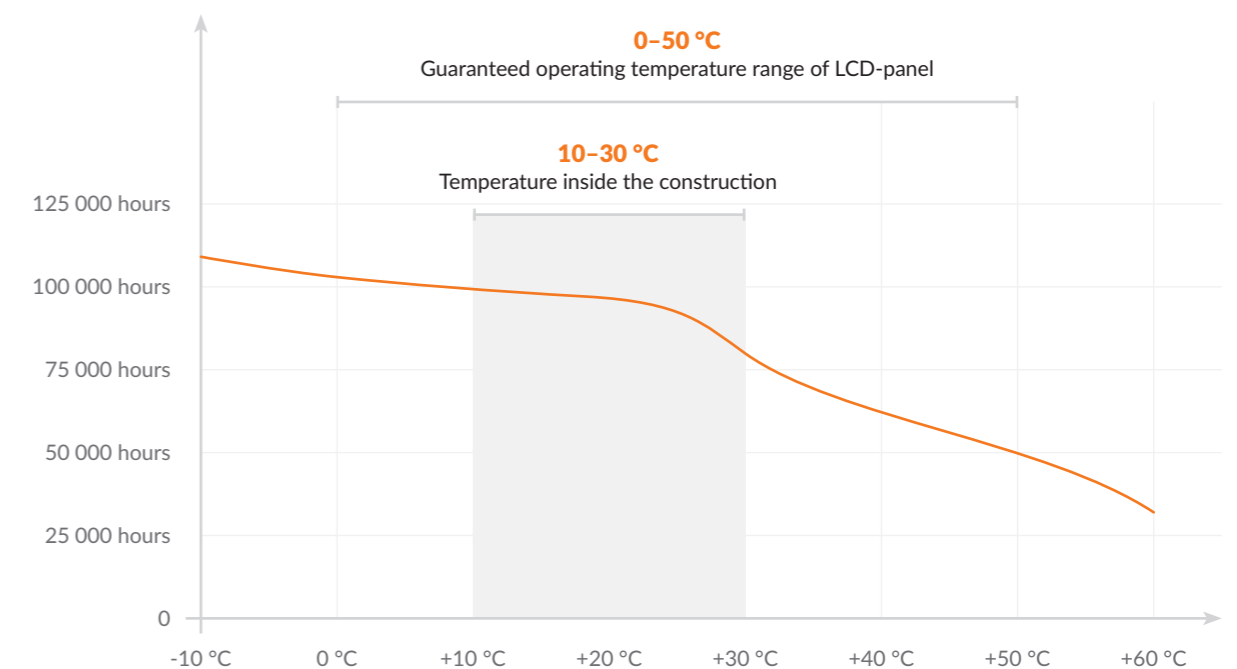
Changes in temperature inside the structure at different outdoor temperatures

°C outdoor											Matrix life ih hours
	-40	-30	-20	-10	0	+10	+20	+30	+40	+50	
°C outdoor											
°C inside the construction	+5	+5	+5	+5	0	+15	+25	+35	+50	—	50,000
°C inside the construction	+5	+5	+5	+5	0	+10	+20	+32	+43	+55	70,000
°C inside the construction	+5	+5	+5	+5	0	+10	+20	+20	+20	+25	100,000

Power consumption



Influence of temperature inside the construction on the service life of LCD screen



Outdoor Bright All-weather



ISO 9001



CE marking



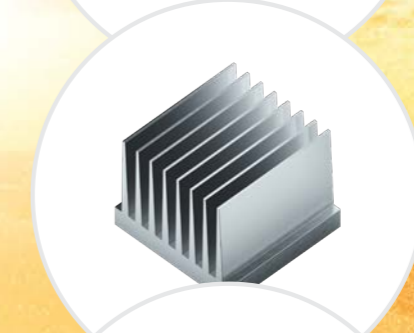
IP65



Touch screen option



Three types of cooling



-40 °C

+50 °C

Outdoor LCD Cassette

DMA OH

Specialized Outdoor LCD screen with integrated radiator cooling system. Includes a set of engineering DiMedia solutions, providing the same temperature at each point of the LCD matrix.

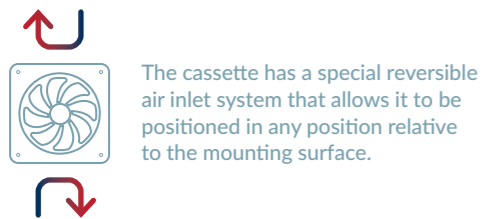
The design of the cassette is patented after numerous software and experimental tests. The electronic components of the cassette are reliably protected from the ingress of dust and moisture according to the standard IP65. The radiator principle of heat exchange provides more than 70,000 hours of continuous operation of the LCD screen, it does not require the use of replaceable air filters and additional maintenance.

For use in direct sunlight, the screen has a high brightness level and increased contrast. The protective glass is equipped with an optional anti-reflective coating. Outdoor LCD cassettes fit for 24-hour use at ambient temperatures of -40 to +50 °C.

The cassette automatically reduces the brightness of the screen depending on the ambient light level. At night, the brightness is reduced to 80%, saving energy consumption.



-  ISO 9001
-  CE marking
-  IP65
-  Touch screen option



Matrix Lifespan



← Read more on the p. 5

Energy Consumption



Cassette Mounting Options

Wall and ceiling-mounted

The cassette is completely ready for use. For example, it can be placed on the wall or hanging from the ceiling.



On supports

The use of an Outdoor Cassette can be a simple and advantageous option without any additional constructions. To do this, it is sufficient to mount it on two supports — portrait or landscape. The cassette has already been prepared for all weather conditions and is equipped with dust protection and IP65 moisture.



The cassettes can be placed at a distance of less than 3 cm from each other, which makes it possible to create double-sided LED screens without a lot of costs.

In a variety of designs

You can mount the cassettes in any DiMedia or third-party designs. The design must provide sufficient air supply into the building*. Cassettes can be installed on several sides of the structure, less than three centimeters apart.



* For different cassette sizes and different designs, the individual required airflow is calculated.

Free-Standing Portrait Outdoor LCD Displays

Display of digital content is possible under any external conditions.

The professional LCD display is protected by anti-reflective glass, has an industrial matrix and is characterized by increased brightness for outdoor use 24/7. Optionally, it can be equipped with a multi-touch panel.

For use in extreme weather conditions of high and low temperature, the design uses a ventilation and heating system developed by our company. Displays work well both in cold northern conditions and in hot and dusty southern conditions.

The Pylon is made of aluminum profile and is available in any color from the RAL catalogue.

In all versions, the entire electrical part is raised from the floor level by 20 centimeters to protect it when the water level rises significantly.

-  ISO 9001
-  CE marking
-  IP65
-  Touch screen option



Specifications

Model	43 LCD	49 LCD	55 LCD	65 LCD	75 LCD	86 LCD
Screen	43"	49"	55"	65"	75"	86"
Resolution, px	1,080 × 1,920			2,160 × 3,840		
Brightness, cd/m ²	2,500–3,500					
Visible part W × H, mm	532 × 944	607 × 1,077	680 × 1,210	808 × 1,433	930 × 1,652	1,066 × 1,897
Construction size* W × H × D, mm	1,307 × 2,858 × 1,240					
Energy consumption, W	330		450	544	800	1,500

* All the constructions are available in two-sided options, (D = 290 mm)

Matrix Lifespan



Energy Consumption



← Read more on the p. 5

Design Options



Free-standing Landscape Outdoor LCD Displays

The landscape layout of the screen is most suitable for displaying information and video advertising with a standard 16:9 aspect ratio.

Where targeted advertising focused on a specific group is to be displayed, the LCD is the best solution.

Commercial messages or media clips can be downloaded remotely and will be displayed instantly.

-  ISO 9001
-  CE marking
-  IP65
-  Touch screen option



Specifications

Model	43 LCD	55 LCD	65 LCD	75 LCD	86 LCD
Screen	43"	55"	65"	75"	86"
Resolution, px	1,920 × 1,080		3,840 × 2,160		
Brightness, cd/m ²	2,500–3,500				
Visible part W × H, mm	1,018 × 573	1,210 × 681	1,433 × 808	1,652 × 930	1,876 × 1,057
Construction size* W × H × D, mm	1,215 × 1,936 × 240	1,340 × 1,990 × 240	1,610 × 2,040 × 240	1,782 × 2,125 × 240	2,071 × 2,183 × 240
Energy consumption, W	330	450		544	1,500

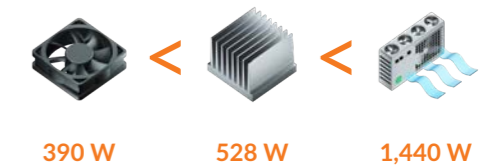
* All the constructions are available in two-sided options, (D = 290 mm)

Matrix Lifespan



← Read more on the p. 5

Energy Consumption



Design Options



Fork-Box: Free-Standing Portrait Outdoor LCD Displays

As options for street pylons, we offer our solutions in the form of two-legged LCD displays. Thus, you have an additional design option to integrate the design into the urban environment.

Cooling, heating and control electronics are integrated in the housing so as not to create any restrictions for operation and safety. In this design, the cooling of the LCD panel can be based on forced ventilation, or the use of a cassette is possible.

-  ISO 9001
-  CE marking
-  IP65
-  Touch screen option



Specifications

Model	43 LCD	55 LCD	65 LCD	75 LCD	86 LCD
Screen	43"	55"	65"	75"	86"
Resolution, px	1,080 × 1,920			2,160 × 3,840	
Brightness, cd/m ²	2,500-3,500				
Visible part W × H, mm	573 × 1,018	681 × 1,210	808 × 1,433	930 × 1,652	1,057 × 1,876
Construction size* W × H × D, mm	712 × 1,320 × 175	861 × 1,445 × 175	988 × 1,668 × 175	1,110 × 1,888 × 175	1,257 × 2,121 × 175
Energy consumption, W	330	450	544	800	1,500

* All the constructions are available in two-sided options, (D = 290 mm)

Fork-Box: Free-Standing Landscape Outdoor LCD Displays

The two-post model can also be used to showcase ads with a popular landscape location.

No matter which model you choose, you will always get the highest quality product for outdoor use.

In this design, the cooling of the LCD panel can be based on forced ventilation, or the use of a cassette is possible.

-  ISO 9001
-  CE marking
-  IP65
-  Touch screen option



Specifications

Model	43 LCD	55 LCD	65 LCD	75 LCD	86 LCD
Screen	43"	55"	65"	75"	86"
Resolution, px	1,920 × 1,080			3,840 × 2,160	
Brightness, cd/m ²	2,500-3,500				
Visible part W × H, mm	1,018 × 573	1,210 × 681	1,433 × 808	1,652 × 930	1,876 × 1,057
Construction size* W × H × D, mm	1,268 × 760 × 175	1,394 × 912 × 175	1,610 × 1,040 × 175	1,836 × 1,160 × 175	2,077 × 1,300 × 175
Energy consumption, W	330	450	544	800	1,500

* All the constructions are available in two-sided options, (D = 290 mm)

Wallet Box

Interactive pylon with high-definition LED displays. Multifunctional advertising and information design with social functions.

The design is equipped with multi-touch screens. It can combine the functions of an advertisement carrier, a city information stand and a navigation system.



Two design options are available:
0.72 × 2.86 m and 1.15 × 2.86 m

USB-charger



Multitouch screens

Additional Equipment



- CCTV camera
- Wi-Fi hotspot
- Emergency call button

Sliding Compartment

The design has a special sliding compartment for storing socially directed objects:

- Pressure meter
- Fire extinguisher
- First aid kit
- Asthmatic inhaler
- Defibrillator



Wallet Box is equipped with high quality LCD displays with multi-touch function and response time not exceeding 10 ms.

If necessary, the design is equipped with two displays, one of which supports a multi-touch.

V-shaped Pylon



Advertising and information design of the “near field” with two LCD panels with safety glass

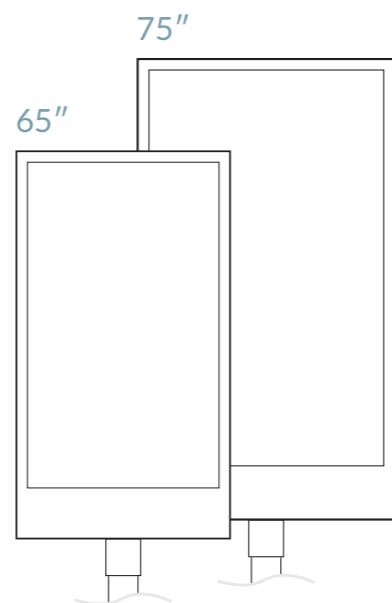
A ready-made solution for advertising and video content broadcasting in areas with a large flow of people (shopping malls, airports, train stations).

The construction is equipped with two 65- or 75-inch LCD panels, 700 cd/m² brightness and 4K resolution. Each panel is equipped with a built-in computer based on the Core i5 processor to display high-resolution video. Behind the front window there are video cameras (5 MP, SX5M4140-V2.0), designed for monitoring and video registration, as well as connecting to image recognition and counting of advertising traffic.

For remote control, the design provides the ability to connect to the network using a LAN cable or built-in Wi-Fi transmitter. It is also possible to equip the design with a 4G-modem, Wi-Fi router and.



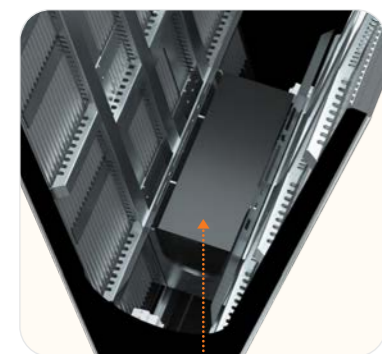
- 4K** Resolution
- i5** Built-in computer based on the Core i5 processor
-  Video cameras, designed for monitoring and video registration
-  Optional equipment with a 4G-modem, WI-FI router and remote power management device



Features

- 1 Seamless design implementation**
No external fasteners, hardware, fittings
- 2 LCD boxes**
Ready to install, fully assembled modules
- 3 LCD panel**
with a diagonal of 65 or 75 inches and a brightness of 700 cd/m²
- 4 Full size front glass**
- 5 Black acrylic end pieces 5 mm**
or 4 mm tinted glass at the customer's request
- 6 Flange-less base frame construction**
Eases the assembly of the structure by turning it into a convenient step-by-step installation of LCD boxes, facing and optional elements through the top (step-by-step assembly – from bottom to top).
- 7 All-metal decorative reinforced base skirt**
For stable protection against external damage
- 8 Plastic decorative transition element (headstock)**
- 9 Factory silk-screen printing around the perimeter of the glass**
A modern alternative to Oracal film or standard silkscreen printing applied around the perimeter of glass by most manufacturers
- 10 Forced ventilation for heat dissipation**
based on SanAce 92W fans (Sanyo Denki, Japan)
- 11 Additional radiator system for heat dissipation**
Uniform heat distribution over the entire panel area, temperature equalization at each point of the LCD matrix
- 12 Specialized niche**
for additional equipment under the removable lid on the snap-on snap-in

Features



• 19 PC Core i5 computer (4GB RAM, 128 GB SSD) with built-in Wi-Fi in the box under the removable lid on the latches



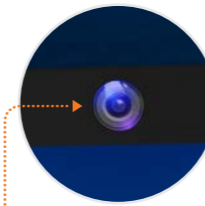
• 20 Rear plane with connectors



• 21 Air intake cassette filters

Options

- 22 Remote power management device via Ethernet/Internet (IP PDU) with SMS control and built-in battery



- 23 Video camera
Designed for monitoring and video registration, as well as connection to image recognition systems and counting of advertising traffic

- 24 36.6-inch horizontal LCD panel
Display of time, weather, temperature, humidity, 112 service messages, EMERCOM and other content at the customer's discretion

- or
- 25 Window for operator logo



- 26 Decorative stainless-steel round table with integrated sockets
220 V or USB for charging phones

- 27 18.5-inch monitors built into the decorative table
with touch screens at an angle to the table plane

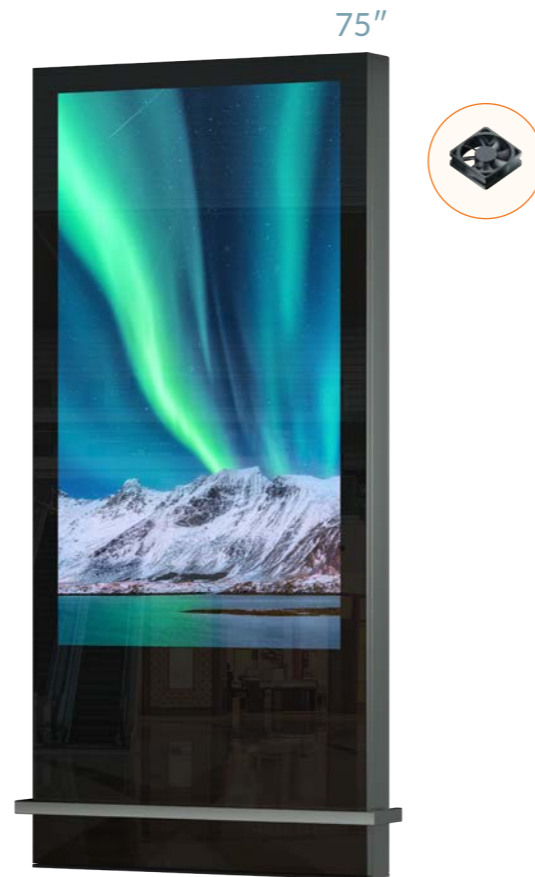
Free-Standing Portrait Indoor LCD Displays

With the transition to digital advertising on high-definition screens, companies are opening up new opportunities for presenting the entire range of products, using only one advertising medium directly at the point of sale.

Industrial quality matrices are installed in a premium housing and can be operated in 24/7 mode. The quality of the assembly and the glass front panel underline the high level of production.

For single-sided construction, Super Slim is available.

-  ISO 9001
-  CE marking
-  IP65
-  Touch screen option



Specifications

Model	43 LCD	55 LCD	65 LCD	75 LCD	86 LCD
Screen	43"	55"	65"	75"	86"
Resolution, px	1,080 × 1920		2,160 × 3,840		
Brightness, cd/m ²	500–2,000				
Visible part W × H, mm	532 × 944	681 × 1,210	808 × 1,433	930 × 1,652	1,066 × 1,897
Construction size* W × H × D, mm	712 × 1,810 × 160	860 × 2,010 × 160	985 × 2,210 × 160	1,110 × 2,410 × 160	1,235 × 2,610 × 160
Energy consumption, W	140		220	425	

* All the constructions are available in two-sided options, (D = 110 mm)

Free-Standing Landscape Indoor LCD Displays

Modern digital LCD displays can broadcast not only advertisements, but also help to navigate the airport or shopping mall.

Efficient sensor technology allows the user to access the information they need.

For single-sided construction, Super Slim is available.

-  ISO 9001
-  CE marking
-  IP65
-  Touch screen option



Specifications

Model	43 LCD	55 LCD	65 LCD	75 LCD	86 LCD
Screen	43"	55"	65"	75"	86"
Resolution, px	1,920 × 1,080		3,840 × 2,160		
Brightness, cd/m ²	500–2,000				
Visible part W × H, mm	944 × 532	1,210 × 681	1,433 × 808	1,652 × 930	1,897 × 1,066
Construction size* W × H × D, mm	1,268 × 1,810 × 180	1,394 × 1,810 × 180	1,615 × 1,910 × 180	1,836 × 2,010 × 180	2,057 × 2,110 × 180
Energy consumption, W	140		220	425	

* All the constructions are available in two-sided options, (D = 110 mm)

Wall Portrait Indoor LCD Displays

Thanks to modern audio-visual technologies, digital advertising opens up many new opportunities to attract buyers' attention to products and promotions.

When the display is placed in the showcase, visitors or customers will receive information about current offers before entering the room. The level of customer attention can be increased with optional loudspeakers hidden in the case.

-  ISO 9001
-  CE marking
-  IP65
-  Touch screen option



Specifications

Model	43 LCD	55 LCD	65 LCD	75 LCD	86 LCD
Screen	43"	55"	65"	75"	86"
Resolution, px	1,080 × 1,920		2,160 × 3,840		
Brightness, cd/m ²	500–2,000				
Visible part W × H, mm	532 × 944	681 × 1,210	808 × 1,433	930 × 1,652	1,066 × 1,897
Construction size* W × H × D, mm	712 × 1,320 × 120	860 × 1,445 × 120	985 × 1,667 × 120	1,110 × 1,890 × 120	1,235 × 2,113 × 120
Energy consumption, W			140	220	425

* All the constructions are available in two-sided options, (D = 260 mm)

Wall Landscape Indoor LCD Displays

Wall-mounted LCD displays can be installed at a small angle to the viewer, which allows you to increase the readability of information by the viewer, especially when the monitor is above eye level.

The landscape format is well suited for providing information to customers through video clips and fragments of films or TV shows. Optionally, the display can be equipped with a multi-touch panel.

-  ISO 9001
-  CE marking
-  IP65
-  Touch screen option



Specifications

Model	43 LCD	55 LCD	65 LCD	75 LCD	86 LCD
Screen	43"	55"	65"	75"	86"
Resolution, px	1,920 × 1,080		3,840 × 2,160		
Brightness, cd/m ²	500–2,000				
Visible part W × H, mm	944 × 532	1,210 × 681	1,433 × 808	1,652 × 930	1,897 × 1,066
Construction size* W × H × D, mm	1,268 × 763 × 120	1,394 × 912 × 120	1,615 × 1,037 × 120	1,836 × 1,162 × 120	2,057 × 1,287 × 120
Energy consumption, W			140	220	425

* All the constructions are available in two-sided options, (D = 260 mm)

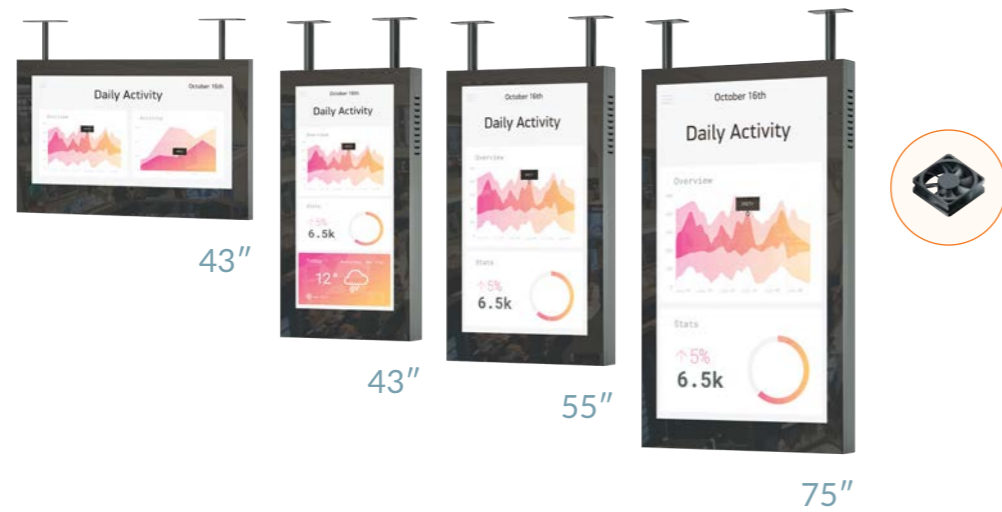
Ceiling-mounted Portrait and Landscape LCD Displays

Inform your customers with convenient wall-mounted LCD displays in places where it is not possible to install a floor or wall display.

Displays can be optionally equipped with a concealed speaker system, expanding the possibilities of using various multimedia content.

For single-sided construction, Super Slim is available.

-  ISO 9001
-  CE marking
-  IP65
-  Touch screen option



Specifications

Model	Landscape			Portrait		
	43 LCD	55 LCD	75 LCD	43 LCD	55 LCD	75 LCD
Screen	43"	55"	75"	43"	55"	75"
Resolution, px		1,920 × 1,080	3,840 × 2,160		1,080 × 1,920	2,160 × 3,840
Brightness, cd/m ²	Window – 1,500–3,000, Indoor – 700					
Visible part W × H, mm	944 × 532	1,210 × 681	1,652 × 930	532 × 944	681 × 1,210	930 × 1,652
Construction size* W × H × D, mm	1,268 × 763 × 50	1,394 × 912 × 50	1,836 × 1,162 × 50	712 × 1,320 × 140	861 × 1,445 × 140	1,110 × 1,890 × 140
Energy consumption, W		140	220		140	220

* All the constructions are available in two-sided options, (D = 110 mm).

Wall and Floor Window Indoor LCD Displays

Enough for pale pictures and poorly readable content! Decorate your showcase with great high brightness displays. Animated clips attract buyers' attention to promotions and your showcase as a whole.

Video content on our bright and super-bright displays guarantees perfect readability even in direct sunlight.

For single-sided construction, Super Slim is available.

-  ISO 9001
-  CE marking
-  IP65
-  Touch screen option



Specifications

Model	Landscape – Wall-mounted			Portrait – Floor		
	43 LCD	55 LCD	65 LCD	43 LCD	55 LCD	65 LCD
Screen	43"	55"	65"	43"	55"	65"
Resolution, px		1,920 × 1,080	3,840 × 2,160		1,080 × 1,920	2,160 × 3,840
Brightness, cd/m ²	Window – 1500–3,000, Indoor – 700					
Visible part W × H, mm	944 × 532	1,210 × 681	1,433 × 808	532 × 944	681 × 1,210	808 × 1,443
Construction size* W × H × D, mm	1,268 × 763 × 180	1,394 × 912 × 180	1,615 × 1,037 × 180	712 × 1,810 × 180	860 × 2,010 × 180	985 × 2,210 × 180
Energy consumption, W			140			140

* All the constructions are available in two-sided options, (D = 260 mm).

Media Player

Structures are equipped with an Android- or Windows-based media player. Media players have enough resources to display high-definition content and connect to the Internet.

On customer request, the design can be completed with software and sensors for remote monitoring.



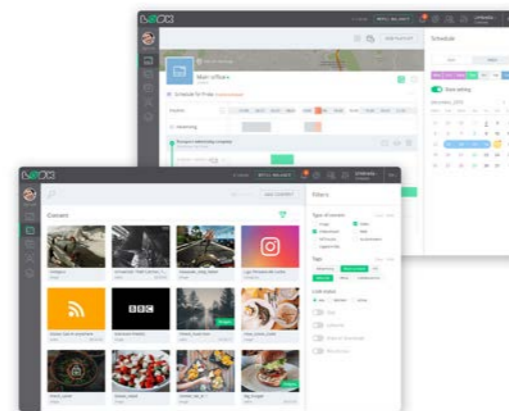
Media Player Options

Model	V1	V2	V3	V4
Content	Full HD	Full HD, 4K	Full HD	Full HD, 4K
OS	Android	Android	Windows	Windows
Processor	Dual-core 1,8-2,2 GHz	Quad-core 1,8-2,2 GHz	Core i3 2-2,5 GHz	Core i5 2,2-3,4 GHz
RAM	1GB	2GB	4GB	8GB
Data storage	32GB SSD	64GB SSD	128GB SSD	240GB SSD
GPU	—	—	Intel Iris Plus Graphics 610	Intel Iris Plus Graphics 640
Network Interfaces	Gigabit LAN 802.11ac WLAN v4.2 Bluetooth	Gigabit LAN 802.11ac WLAN v4.2 Bluetooth	Gigabit LAN 802.11b WLAN v4.2 Bluetooth	Gigabit LAN 802.11ac WLAN v4.2 Bluetooth
Connectors	1 × USB 1 × DVI 1 × HDMI	2 × USB 2.0 2 × USB 3.0 1 × DVI 1 × HDMI	4 × USB 2.0 1 × USB 3.0 1 × HDMI 1 × DisplayPort 1.2	4 × USB 3.0 1 × USB 3.1 Gen.2 1 × HDMI 2.0 1 × DisplayPort 1.2

Software

Based on experience, we will equip displays with the most appropriate content management software for your needs.

You can also use your own content management software for Android and Windows media players.



LCD Display Monitoring System Web Interface

Monitoring system for LCD displays in any number of structures from your personal cabinet.

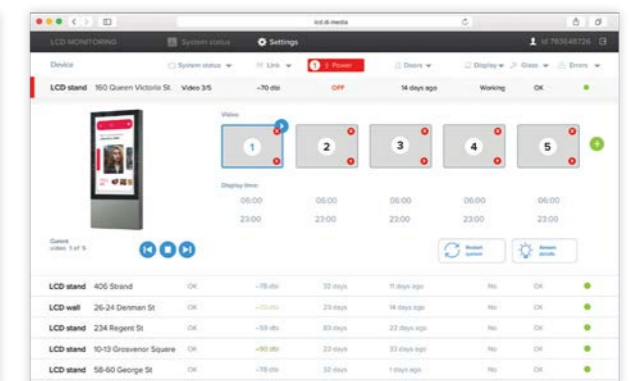
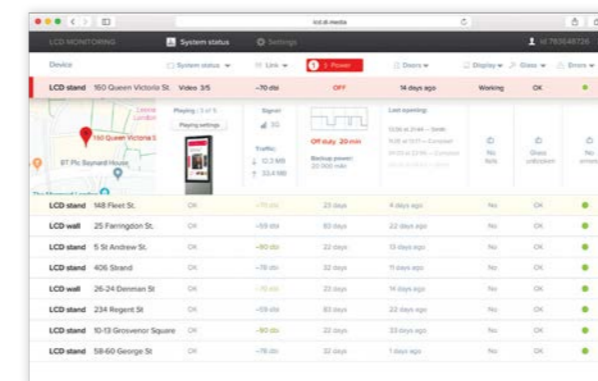


The monitoring system includes the following sensors:

- Fans
- Air-conditioning works
- Brightness
- Internal temperature
- Outside temperatures
- Turning the power on and off
- Turning the entire system on and off
- Flap openings
- Glass integrity
- Fires
- Shock sensors
- Incline
- Water level

Internet access from anywhere in the world

All types of structures are connected to a secure monitoring network.





Logistics

We deliver with our own trucks or with the help of transport companies.

If necessary, we deliver by rail in containers. To the countries far abroad delivery is carried out by sea ways, also in containers.

Full safety during shipping is ensured by optimal stacking and secure fastening of the product.



Video Walls

Modular design of professional LCD panels, installed in a special frame and forming a video screen of the required size.

Easy installation and modularity

Video walls are available in various sizes and are designed as one or more LCD panels. The modularity of the construction and the standard fixing points make it easy to mount and dismantle additional sections.



Savings of up to 30%

Our special delivery method is Self-assembly kit allows you to save up to 30% of the cost of products by significantly reducing the cost of transporting components to the place of installation.



Finished structures

Up to 80% high capacity with Self-assembly kit

> 600
delivery directions

7 days
minimum delivery time

> 200 000 km
our fleet of cars passes through every year



Our company

“DiMedia” was founded in 2004. The main direction of our work is the design and production of ready-made solutions for urban infrastructure.

DiMedia is one of the leading manufacturers of advertising structures in the domestic CIS market.

In 2018, the company entered the international market and continues to consolidate its position.



Security

Our customers share with us their experience of urban infrastructure products exploitation in various climate conditions. We help them to find solutions.

Our production works in double shifts and ensures stability of delivery times. Each design component is subjected to strict quality control.



Quality

When manufacturing our products we take into account the conditions of the operating sites. Our profile systems are developed according to IP standards with protection against dust and moisture. We use only hard aluminium alloy 6063 (AD31) with high corrosion resistance.

We pay particular attention to the security of electronic components. We provide natural and active ventilation to prevent condensation and equipment overheating.

Our products are painted in our own paint-spraying booth. We use a polymer-powder coating method.



Confidence in future

Profile systems and supporting structures are checked with calculations of nodal loads. This is described in the standard projects that are provided for each product.

All mechanical and electronic systems go through load testing. We choose the perfect parameters to ensure durability.

The software is developed by teams of experts. We are currently working on cloud computing technologies for remote control and monitoring of our advertising structures.

25

types of products
and over 200 models
and modifications

> 12 000

of structures produced
since 2004

65 000 m²

of metal and glass are used
in our designs every year

7

Our designs are installed
in 7 countries around the world

> 600

delivery destinations –
from Western Europe to the Far East

> 3 000

our designs have been assembled by
our clients themselves
on our clear instructions

> 200 000 km

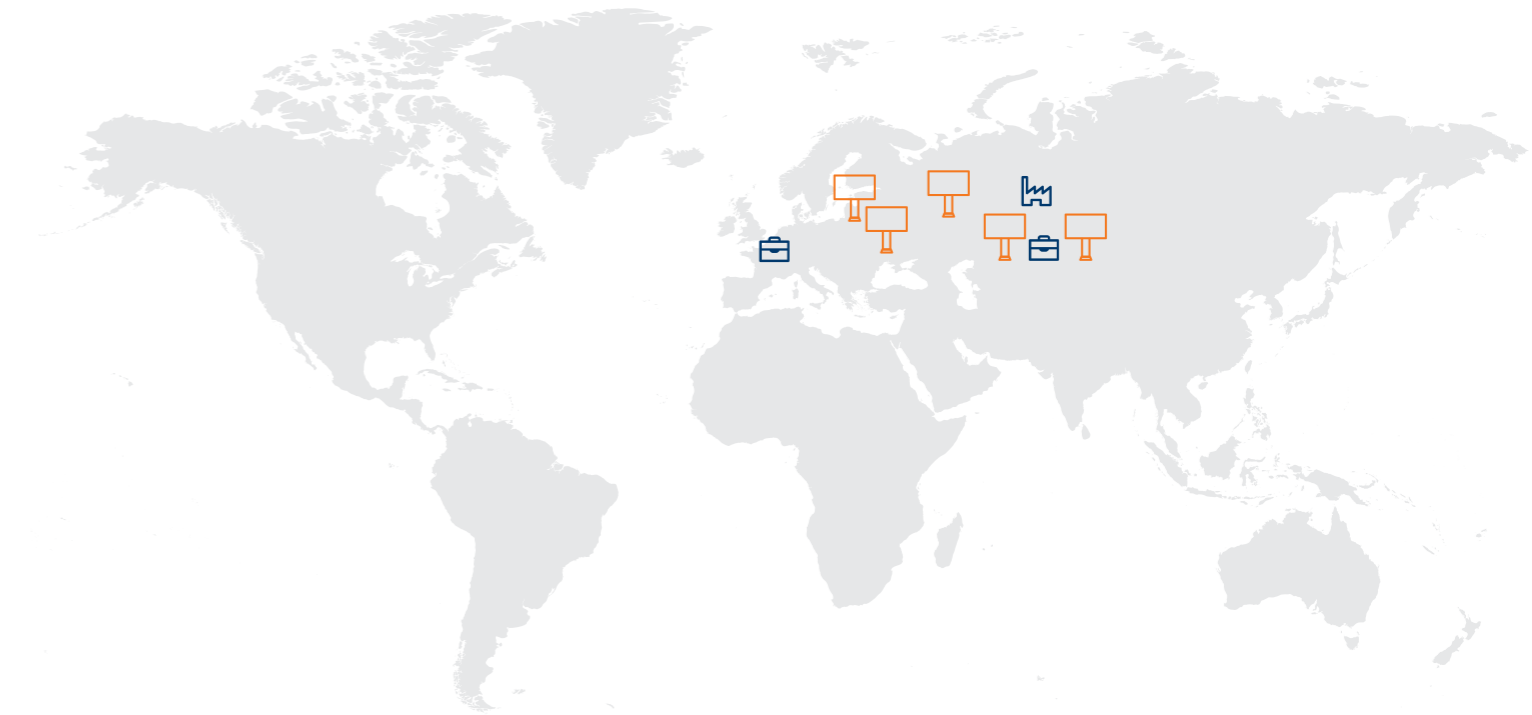
our fleet of cars passes
through every year

7 days

minimum delivery time

1 year

minimum warranty
on all designs



Delivery

We deliver our products with our own trucks or transport companies. If necessary, transport in containers by rail. To far abroad countries we ship by sea routes in containers.

Complete safety during transportation is ensured by optimal stowage and secure fixing.

Our special way of delivery "Self-assembly kit" allows you to save up to 30% of the cost of transportation due to the reduction of volume necessary for transportation.



Design

Aluminium profile systems, load-bearing structures and exterior elements, which give each model a unique image, are the designs of "DiMedia" engineers.

Collaborations with different design studios and an attentive attitude towards project development became important components of the company's success.



Geography

Our products are installed in more than 400 settlements in 7 countries. Our main goal is further strengthening of our position in the international market of advertising and social infrastructure.

In 2018, we opened a representative office in France that provides sales and a full range of warranty and post-warranty services in Europe.

Since 2019 we have participated actively in the largest international exhibitions in Europe, where we have demonstrated both the flagship models and the latest developments. In the same year the international version of our site was launched.



Warranty Service

"DiMedia" offers its clients warranty and post-warranty service.

All products are accompanied by clear documentation, including foundation preparation and installation details.

Engineering documentation is supplemented by individual requirements having consideration for construction sites.

It is possible to send specialists for personnel training, monitoring installation and maintenance.

History

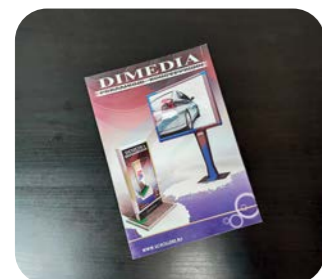
For 17 years we have been accumulating experience in designing advertising structures and objects of the urban environment. We patented our developments, improved our production and delivery. We entered the nearest foreign markets and were fixed on them. We've been accommodating at local and international expositions.

2004

Opening of production, development of the first advertising structures. Sale of the first batch of billboards. The company's website was opened.

2005

Start of production of all-metal stopping pavilions. Preparation of new advertising structures. Opening of the engineering department.



2006

The production of roller displays based on the digital roller system with mechanical endstops has started.

2008

The first exposition of the company at the international exhibition "Advertising-2008". Scroller's presentation with automatic electric lifts. New DSS (digital scrolling system) roller system and products based on it.



2009

Production of dynamic Three-sided Pylons has been launched. For the first time ever, design systems were put on sale, allowing the customer to assemble and install the structures independently on an easy and clear instruction.

2010

We launched a product line of new design – High-tech. Advertising benches and Bus Shelters with a lightbox advertisement without glass were designed. Full transition to LED lighting and the company's entry into the LED screen segment.

2011

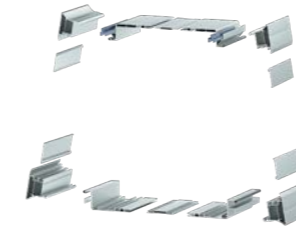
New designs "Screenboard", on the one hand – LED screen, on the other – roller display up to eight posters

2013

A subsidiary metal processing and steel structure production center was opened. Presentation of stopping pavilions with Digital Citylights.

2012

The first annual catalogue of products is published. In the future, these catalogues will be sent to customers at each delivery. The production area has been increased. A new type of product profile has been developed – iPhone`s Design, which later transforms into a line of products "Lux". A number of new video structures are presented, including Digital Billboards with frontal service, Three-sided Digital Pylons and a Digital Citylights.



2014

The company turns 10 years old. A new aluminum profile system is being launched. Overlaying glass is a new approach to glazing large advertising structures.

2015

A new series of advertising structures "Lux" is presented, the distinguishing feature of which are overhead glasses, as well as a combination of modern style and classics. The modular advertising and information index are developed. Transition to sensorless scrolling system.



2016

Presentation of the fully sensorless roller system of the SSS (smart scrolling system) series. The system of remote monitoring of advertising structures and the option to control the roller system from your smartphone via Bluetooth are presented.

2017

Presentation of dynamic backlighting for SSS (smart scrolling system) roller systems.



2018 (III quarter)



Representative office has been opened in France.

2019 (I quarter)

Participation in the international exhibition in Amsterdam ISE 2019. Production of outdoor LCD solutions with increased brightness from 3000 cd was launched.

2020

Presentation of our smart bus shelter with separate standing pylon on "Infotech" forum in cooperation with the largest digital operator of Russia "Rostelecom". The new bus shelter unites the development of two companies in the area of "Safe city" and "Comfortable environment".

2018 (II quarter)

Development of GSM modules are completed for remote control and monitoring of roller systems.





DiMedia, manufacture:
Russia, Tyumen
+ 7 3452 638030



DiMedia, representative office:
France, Lyon
+ 33 608356778



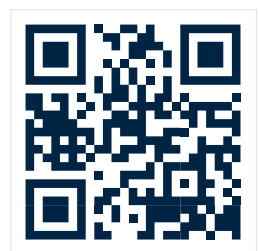
@dimediacompany



/dimedia.official



info@di.media



www.di.media